

# Carlisle Country Club

## A History

### 1924 – Present

By: Karen Shughart



It has survived hurricanes, floods and tornadoes, an 18-wheeler on the golf course and an emergency landing of a hot air balloon. Arnold Palmer reputedly slept here, and Governor William Scranton was an honorary member. Women consistently have had equal rights on the golf course, and our diverse membership has always included people from many ethnic, religious and racial backgrounds.

Since 1924, Carlisle Country Club has been a haven for those eager to experience outstanding golfing opportunities, friendly and open camaraderie, exciting family and social events and respite from the hectic pace of life. Here's how it started.

#### Country Club Built on Former Indian School Site

The Club actually is located on a site that was once home to the Susquehanna Indians. Indian crafts, tools and other artifacts were found during excavation for the golf course in 1924, and continue to this day to be discovered.

In 1883, the property was purchased by the Federal government for student farmers enrolled at the Carlisle Indian School. According to Bill Sunday, who has been a member here since 1951, his father David Sunday purchased the land from the government in 1901 for use as a 157-acre farm. Each summer Bill's aunt would visit from out-of-town, and the Sundays would invite her friends from Carlisle to a corn roast in the meadow. When some of these friends decided the property would be a perfect location for a country club, they contacted the Sunday family. And the wheel was set in motion.

- **Club Organized by Notable Residents of Carlisle**

Among the organizers of the Club are names recognizable by many members even today: Judge Fred S. Reese, William Jackson, William Fetter, Lyman Hertzler and Walter Stuart, who was elected the first president. When the charter was issued in March 18, 1924, twelve men became charter members: E.E. Barnitz, Abram Bosler, W.H. Goodyear, Raphael S. Hays, Merkel Landis, George E. Lloyd, Frank E. Masland, Jr., J. Fred Mohler, Judge H.T. Sadler, O.H. Stamer, W.R. Shearer and Walter Stuart.

The charter says Carlisle Country Club was formed “for social enjoyment by providing a place of entertainment and suitable grounds for the playing of golf, tennis and other games, sports and pastimes, and for the encouragement of the same.”

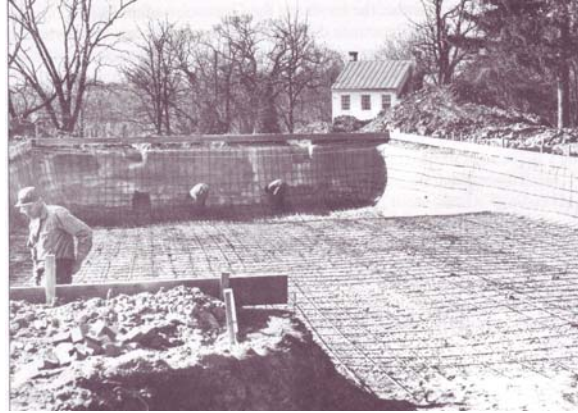


- **Conversion to Country Club Begins- Major Advancements Take Place**

Conversion from farm to country club began first by renovating the 140-foot barn, at that time one of the largest in the Commonwealth. The clubhouse has undergone many renovations since that time, with major changes occurring in the ‘40s, ‘60s and ‘70s, ‘90s and into this century. But the original structure still stands. A nine-hole golf course was developed in the ‘20s; the second nine in 1934. Holes were named for prominent features which members believed defined them:

- |                     |                        |
|---------------------|------------------------|
| 1. Twin Cherries    | 10. Great Expectations |
| 2. The Swamp        | 11. Golfer’s Delight   |
| 3. Land’s End       | 12. Valley View        |
| 4. Sunken Valley    | 13. The Punch Bowl     |
| 5. Old Hickory      | 14. The Conodoquinet   |
| 6. Hell’s Half Acre | 15. Indian Springs     |
| 7. Sunken Green     | 16. Old Orchard        |
| 8. The Pines        | 17. The Gully          |
| 9. The Club House   | 18. Westward Ho        |

While there have been many improvements to the course over the years, the original design has been altered only to keep pace with modern technology. The use of names to identify the holes was dropped in 1960 in favor of the standard numbering system used today. Additions during that decade included a bridge between the 17th and 18th holes, a pond to the left of the 11th hole and moving the tee for hole #1 from behind the pro shop to its current location.



The first tennis courts were constructed of clay and built on the site where the swimming pool is now located. The original pool, built in 1954, was financed by the sale of land which was developed as Country Club Acres. At that time, the courts, which have since been torn down, were moved to the location along Route 11.

- **Membership Doubles in Size in the '60s**

In the 1960s membership doubled in size, from just below 200 families to 400. Dues averaged around \$200 per family during the decade. Member demographics changed as West Shore residents began to discover the Club and eventually outnumbered those residing in Carlisle. Buffet suppers, cartoons and games enticed families with young children to join, and family nights became a regular inclusion in the social calendar. The 1962 President's Ball cost \$8.00 per couple and included cocktails, dancing and a prime rib dinner.



Barb Rankin remembers the '60s. A member since 1967, Ms. Rankin had actually played golf here since her parents joined in the 1950s. She and fellow golfer Pattie Howell Parsons, who with her family joined the Club in 1981, acknowledge that Carlisle Country Club has been one of only a few in the area that has no restrictions for women golfers. Ms. Rankin, who played her first celebrity tournament in 1961 and Mrs. Parsons have won numerous district and club championships since becoming members.

“We’ve always had the most members in district tournaments,” says Mrs. Parsons. “We’ve dominated district play with the number of participants and wins.”

“Prior to the '60s, there was no organized group of women’s golfers” says Ms. Rankin. “ It started with the Bogey Bunch, a group which plays nine-holes on Tuesday mornings, and a Thursday night Sunset League that grew into the current Chip ‘N Chatter group which plays 18 holes on Wednesday mornings.” Today Bogey Bunch has 30 members, and Chip ‘N Chatter has 68.

- **Facilities Start to Change to Meet Diverse Needs**

As membership continued to grow, the facilities needed to change to serve diverse needs. During the '60s, major additions included the Pine Room Bar, a pump house with irrigation expanded beyond greens and tees to include fairways, a paved parking lot, pro shop, and an upstairs bar. Improvements included enlarging the kitchen and locker rooms, adding air conditioning in the ballroom, placing moveable walls between the dining room and ballroom, constructing 1st floor restrooms, enlarging the manager’s office and enclosing the screened porch, which later became what we now know as the Carlisle Room.





- **1970s is Golden Time for Club**

By the early 1970s membership had grown to 800 (combined social and golf). Dues went from \$264 in 1970 to \$660 by the end of the decade. Hurricane Agnes struck and holes 13, 14 and 15 were under 18.5-feet of water. Damages totaled around \$6400. Libby Galloway, a 22 -year-old from Rock Hill, South Carolina, became the club's first female tennis pro. The Pine Bar was renamed the Coleman Room in honor of Bill Coleman, an employee for 40 years and the assistant manager at that time. Saturday Night Fever, a hit movie during the latter part of the decade, influenced music played at club social events. Disco dance lessons offered during the late '70s were a resounding success.

Carlisle Country Club celebrated its Golden Anniversary the fourth weekend in July, 1974 with a dinner dance, family picnic and several golf tournaments. At one of the golf tournaments, members were asked to dress in golfing attire from the Roaring Twenties, to reflect the time when the club was first chartered. Prizes for the Best Dressed were awarded to Mrs. William Worley and Dr. William West as individuals and a foursome comprised of Murray Belden, William Burkholder, Larry Featherstone and Charles Mowery.

Over 200 persons attended the dinner dance which commenced with a cocktail party and was followed by entertainment provided by Tiny Wright and his Big Band Orchestra. Cost for the event was less than \$20 per couple. Guests feasted on shrimp cocktail, Caesar salad, prime rib, baked potatoes, peas with almonds, assorted relishes, cherries jubilee, mints, coffee, wine and champagne.

The '70s continued to be boom years. Membership remained stable. In 1978, the golf course was resodded, seeded and graded; bushes and trees were planted, and the service road was blacktopped. Drainage pipes were installed to eliminate water in low-lying areas, and new cart paths were established around several of the tees. But things were about to change.

**Despite '80s Economy Downturn, Club Moves Forward**

By 1980, membership had dropped from its earlier high of 400 members to about 250. Inflation, the gas crisis, high unemployment and a general downturn of the economy took a toll on the Club as well. Dr. John Allison, a past president of the Board, remembered those times.



“We began to have trouble attracting members,” said Dr. Allison, who joined the Club in 1974. To encourage growth, prospective members were courted at a Sunday Champagne Brunch.” At one point,” said Dr. Allison, “the board eliminated the initiation fee, and when it was reestablished approved a policy allowing members to pay it over three years.” Dues soared from \$875 in 1980 to almost \$1500 by the end of 1985.

But the ‘80s had some high spots as well. Charlie Stringfellow, who has been a member since the ‘60s and has won numerous club and district tournaments since that time, said improvements to the golf course continued during the decade. Among those were a new irrigation system which was the forerunner of today’s automated system, and the implementation of a program to replace trees damaged by storms.

During the decade The Bogey Bunch and Chip ‘N Chatter ladies’ golf groups sponsored fashion shows and other activities to encourage women members to become more active. Golf pro Nancy Lopez visited the club. The swim team, The Thundering Tuna, had a winning streak. A hoedown held in 1986 was a big success. The fitness craze which had spread throughout the nation had an impact on Club members. Aerobic dancing lessons attracted a crowd. A Fall Foliage Festival and Dance in 1989 gave way to a multitude of events now celebrated here each autumn.

- **1990s -- Prosperous Decade**

The ‘90s was a prosperous decade for The Carlisle Country Club. Dr. Allison indicated that membership was at an all-time high, with a waiting list in the golfing categories. Finances were sound, and in 1995 the Board of Directors developed its first long-range plan.

“We wanted Carlisle Country Club to meet the diverse needs of all its members,” said Dr. Allison, “which is why we developed the plan. We wanted this to be a full-service country club.”

Charlie Stringfellow, who in 1996 was inducted into the South Central Pennsylvania Chapter Sports Hall of Fame, agreed. “A good golfing program and social activities are healthy for a country club.” He attributed positive changes in both to a highly motivated and competent professional staff.

During this prosperous decade, the Board of Governors completed a number of long-awaited projects. As the result of the long -range plan, renovations of the clubhouse facade and infrastructure began with the construction of a new roof. The demolition of the old farmhouse, once home to several golf professionals and golf course superintendents, was accomplished along with removal of the tennis courts which no longer were being used.

The golf course, golfing activities and club house also underwent a number of improvements. On the golf course these occurred during 1997 and 1998. During that time, course Superintendent Greg Fantuzzi says a new, automated irrigation system, yardage markers and a rest stop at number seven tee area were installed. Golfing activities continued to expand for club members, and tournaments attracted record-breaking numbers. Club additions in 1999 included new exterior siding and windows, an outdoor dining area, and a gas-burning fireplace.

During this last decade of the 20th century, social activities ranged from a Hawaiian Luau and Country Western night with country line dancing during the earlier years, to mini-golf tournaments, elegant wine tasting dinners and semi-formal balls with swing bands. Attendance at family events like Breakfast with Santa, the Easter Brunch and Thanksgiving dinner broke records.

In 1991, a tornado ripped through the golf course and grounds destroying 160 trees and damaging 120 others. New trees were planted, replacing those that were destroyed. During the summer of 1998, the hot air balloon mentioned earlier made an emergency landing on the golf course. Nineteen- ninety eight was also the year dining room supervisor and senior employee Chris Bailes celebrated her 20th anniversary with the Club. Although no longer a full-time employee, her continued presence, warmth and dedication to excellence make dining at the club special for all members.

“There have been a number of positive changes to the Club since I first began working here,” notes Mrs. Bailes. The friendly atmosphere and excellent food has attracted more young members at events than when she first began working banquets here, and she believes that staff is catering more to members’ needs.



- **Millennium Celebration Kicked-Off New Century**

The 21st century was heralded in by a Millennium Ball on New Year's Eve, 1999. Since that time a number of improvements have occurred at Carlisle Country Club. Major renovations to the clubhouse were approved in 2002, and by 2003 the administrative offices were moved from the first floor to the ground floor to accommodate a new dining room, bar and the Hearth Room, an inviting sitting area with a fireplace. A new swimming pool, bathhouse, bar and snack bar were constructed, and the parking lot was expanded during the same time frame.

“The changes have provided a shot of adrenalin to the membership,” says Club Manager Kris Shultz, “and have generated increased interest in the Club by current and prospective members.” He indicated that the renovations have attracted a number of young families whose children have become participants in the swim team and junior golf program. Social events have ranged from cooking classes with the chef to cigar nights to oldies dances as well as a number of family-oriented activities.

#### Appendix One

##### MANAGERS- 2007

Kris Shultz, Club Manager

Greg Fantuzzi, CGCS, Golf Course Superintendent

Chip Richter, Golf Professional

##### **PRESIDENTS**

1923-24-25 Walter Stuart

1925-27 E. E. Barnitz

1928-29 R.P. Masland

1930-31 John D. Faller, Sr.

1932-33 Samuel M. Goodyear

1934 -35 Lyman G. Hertzler

1936 Hon. Fred Reese

1937 - 38 Joseph P. McKeehan

1939 W.L. Jackson

1940 Paul R. Teitrick

1941 Hon. Mark E. Garber, Sr.

1942-43 Dr. W.R. Shearer

1944-45 Joseph P. Stapchinskas

1946 J.A. Walters

1947 John Landis

1948-49-50 Harry P. Breen

1951 O.W. Sailer

1952-53-54 Joseph J. McIntosh

1955 Walter Shuman

1956-57 Creedin Eppley

1958 Dr. T.S. Armstrong

1959 Sherman W. Ladd

1960-61 R.E. Williams, Jr.

1962-63-64 Murray G. Belden

1965-66 E. Clair Adams

1967-68 Edgar E. Wolf

1969-70 Robert A. Greenawalt

1971 Michael O'Hanlon

1972 Charles E. Clepper

1973 L. H. Featherston

1974-75 Murray G. Belden

1976-77 W. Reed Ernst

1978-79-80 Kenneth R. Reher

1981-82 Donald E. Miller

1983-84 John F. Allison

1985-86 Rodger E. Goodling

1987 William G. Davidson

1988-89 Michael E. Galdino

1989-90 Albert H. Masland

1990-91 Robert F. Marek

1991-92 Thomas P. Verney

1992-93 Richard L. Kunkle

1993-94 Wally Vogelsong

1995-96 Dr. John Allison

1997-98 Robert Reisinger

1998-2000 Dr. John Allison

2000-2002- James W. Parsons

2002-2003- Dr. Mark Pinker

2003-2005- James Varhola

2006-2008- Richard Clark

## APPENDIX II CLUB CHAMPIONS

### Men's Champions

1926 Dr. W. R. Shearer	1954 Ralph A. Scrafford	1982 Rick Kunkle
1927 Rev. J.W. Shillington	1955 William Davidson	1983 Charles Stringfellow
1928 Harry Levine	1956 William Davidson	1984 Richard A. Hrip
1929 Harry Levine	1957 Benny Patrak	1985 Richard A. Hrip
1930 D. W. Sullivan	1958 Richard Burgoon	1986 Scott A. Cole
1931 Col. H.P.Carter	1959 Robert Myers	1987 Randall L. Valk
1932 Harry Levine	1960 William Davidson	1988 Scott A. Cole
1933 Harry Levine	1961 William Davidson	1989 Jeffrey A. Sunday
1934 Dr. W. Baird Stuart	1962 William Davidson	1990 J.Edward Short
1935 R.B. Scholes	1963 William Davidson	1991 Robert A. Olsen
1936 R.B. Scholes	1964 Richard Burgoon	1992 Jeffrey A. Sunday
1937 Robert H. Davis	1965 Charles Stringfellow	1993 Randall L. Valk
1938 Robert H. Davis	1966 Richard Burgoon	1994 David S.Walker
1939 Robert H. Davis	1967 Richard Shomaker	1995 David S. Walker
1940 Robert H. Davis	1968 Charles Stringfellow	1996 David S. Walker
1941 Robert H. Davis	1969 Robert Belden	1997 J. Edward Short
1942 George B. Faller	1970 Robert Belden	1998 Jeff Frazier
1943 J.P.Stapchinskas	1971 Richard Burgoon	1999 Josh Cleck
1944 Capt. G.J. Earle	1972 Charles Stringfellow	2000 Matt Zito
1945 Jack N. Landis	1973 Richard Hrip	2001 Jeff Frazier
1946 David W. Burger	1974 John Donohue	2002 Jeff Frazier
1947 David W. Burger	1975 Richard Hrip	2003 Jeff Frazier
1948 Robert Burger	1976 Richard Hrip	2004 Jeff Frazier
1949 Capt. James W. Stovall	1977 Richard L. Brenner	2005 Jeff Frazier
1950 Sid A. Carson	1978 Richard Hrip	2006 Jeff Frazier
1951 Sid A. Carson	1979 Scott Stoner	
1952 Sid A. Carson	1980 Jim Dolan	
1953 Lt. Rex Eaton	1981 Richard Hrip	

### **Ladies Club Champions**

1930 Elizabeth Hays	1964 Barbara Gordon	1989 Ruth Stover
1931 Wilma Hershner	1965 Jo Gelbke	1990 Ruth Stover
1933 Ida Brown	1966 Barbara Rankin	1991 Ruth Stover
1937 Mary Grove	1967 Barbara Rankin	1992 Pattie Howell
1938 Mary Lavine	1968 Barbara Rankin	1993 Ruth Stover
1939 Mary Grove	1969 Billie Pownall	1994 Pattie Howell
1940 Catherine Gallett	1970 Barbara Rankin	1995 Ruth Stover
1941 Daisy Stapchinskas	1971 Barbara Rankin	1996 Ruth Stover
1942 Daisy Stapchinskas	1972 Barbara Rankin	1997 Barbara Rankin
1947 Mary Grove	1973 Barbara Rankin	1998 Ruth Stover Clements
1948 Daisy Stapchinskas	1974 Barbara Rankin	1999 Ruth Stover Clements
1949 Daisy Stapchinskas	1975 Barbara Rankin	2000- Pattie Howell Parsons
1950 Julia Harrigan	1976 Barbara Collings	2001 Pattie Howell Parsons
1951 Julia Harrigan	1977 Barbara Rankin	2002 Pattie Howell Parsons
1952 Ann Rutherford	1978 Barbara Rankin	2003 Ruth Stover
1953 Ann Rutherford	1979 Barbara Rankin	2004 Ruth Stover
1954 Ann Rutherford	1980 Barbara Rankin	2005 Pattie Parsons
1955 Barbara Gordon	1981 Barbara Green	2006 Pattie Parsons
1956 Dorothy Edens	1982 Barbara Rankin	
1958 Ann Scrafford	1983 Barbara Rankin	
1959 Merle Jacobson	1984 Barbara Rankin	
1960 Barbara Gordon	1985 Barbara Rankin	
1961 Merle Jacobson	1986 Pattie Howell	
1962 Merle Jacobson	1987 Pattie Howell	
1963 Joan Keith	1988 Ruth Stover	

### **Senior Club Champions**

1985 James H. Dolan	2000 Dr. Joseph F. Green, III
1986 Robert Myers, Sr.	2001 William Davidson
1987 William Davidson	2002 Robert F. Marek
1988 Dr. Joseph F. Green, III	2003 Charles Stringfellow
1989 Charles Stringfellow	2004 Charles Stringfellow
1990 Dr. Joseph F. Green, III	2005 Charles Stringfellow
1991 Charles Stringfellow	2006 J. Edward Short
1992 Charles Stringfellow	
1993 Charles Stringfellow	
1994 Charles Stringfellow	
1995 Charles Stringfellow	
1996 Charles Stringfellow	
1997 Charles Stringfellow	
1998 Robert F. Marek	
1999 Dr. Joseph F. Green, II	

**Jr. Club Champions**

1970 Terry Fink  
1971 Terry Fink  
1972 Richard Fink  
1973 Jeff Sunday  
1974 David Gulbrandsen  
1975 Gary Moffat  
1976 John Ziegler  
1977 Craig Allison  
1978 Craig Allison  
1979 John West  
1980 Ken Dardis  
1981 Scott Cole  
1982 Keith Dardis  
1983 Joseph Shriver  
1984 Joseph Centurione  
1985 Robert Marek, Jr.  
1986 Francis S. Vaughn  
1987 Teddy Dunn  
1988 Robert Marek  
1989 Clay Davidson  
1990 Heath Davidson  
1991 Brian Connellan  
1992 Brian R. Clark  
1993 Brian R. Clark  
1994 Ty Sears  
1995 Ty Sears  
1996 Andrew Varhola  
1997 Matt Richards  
1998 Josh Cleck  
1999 Josh Cleck  
2000 Marc Matalavage  
2001 Marc Matalavage  
2002 Cole Peffer  
2003 Jerry Brown  
2004 Tommy Parker  
2005 L.J. Scurfield  
2006 L.J. Scurfield